

# General Description

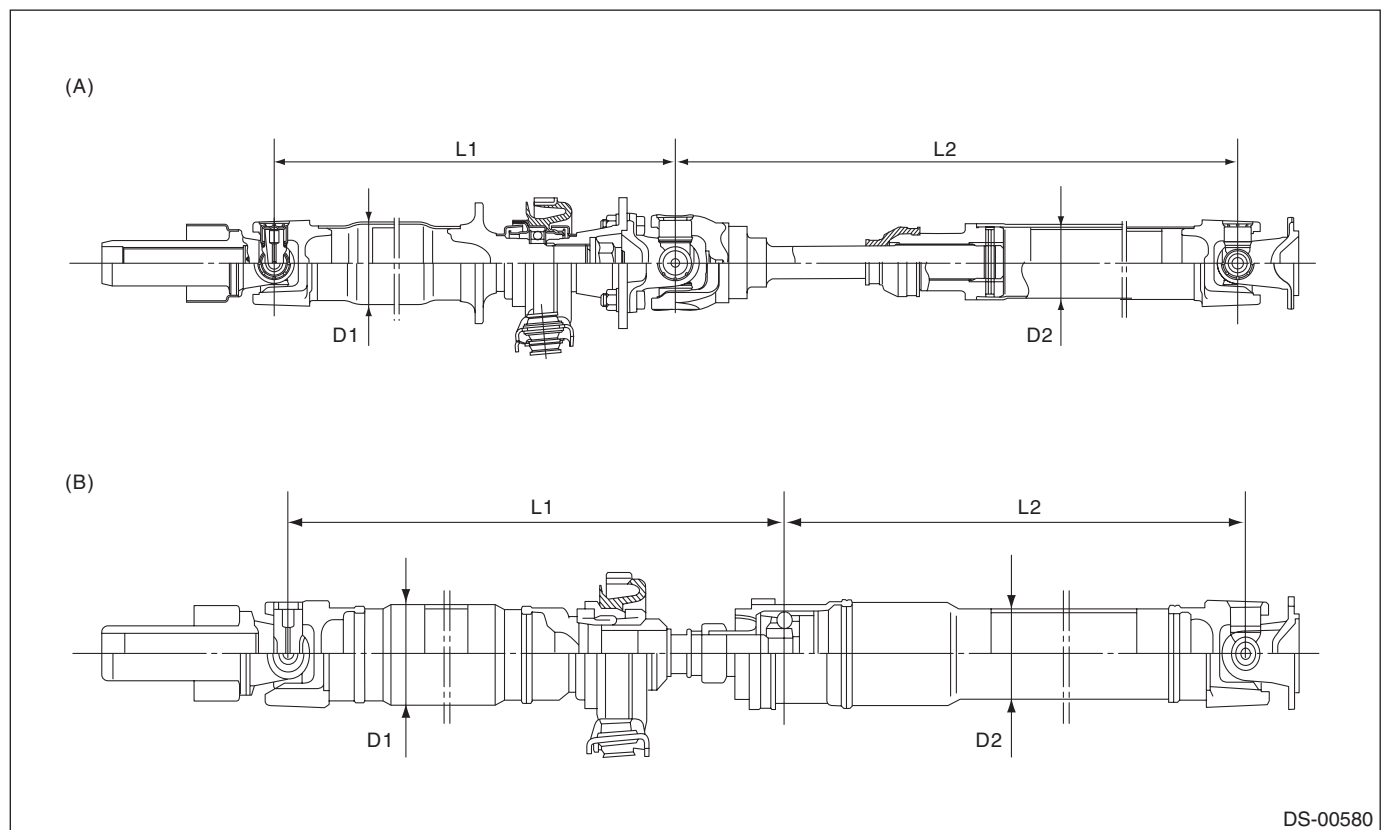
## DRIVE SHAFT SYSTEM

### 1. General Description

#### A: SPECIFICATION

##### 1. PROPELLER SHAFT

Model		Except for STI model		STI model
		CVT model	MT model	
Propeller shaft type		EDJ		3UJ+CPS
Front propeller shaft joint-to-joint length: $L_1$		578.0 mm (22.76 in)	735.5 mm (28.96 in)	633.0 mm (24.92 in)
Rear propeller shaft joint-to-joint length: $L_2$		723 mm (28.46 in)		753.5 mm (29.67 in)
Outer diameter of tube:	$D_1$	63.5 mm (2.50 in)		70.0 mm (2.76 in)
	$D_2$	57.5 mm (2.26 in)		57.0 mm (2.24 in)



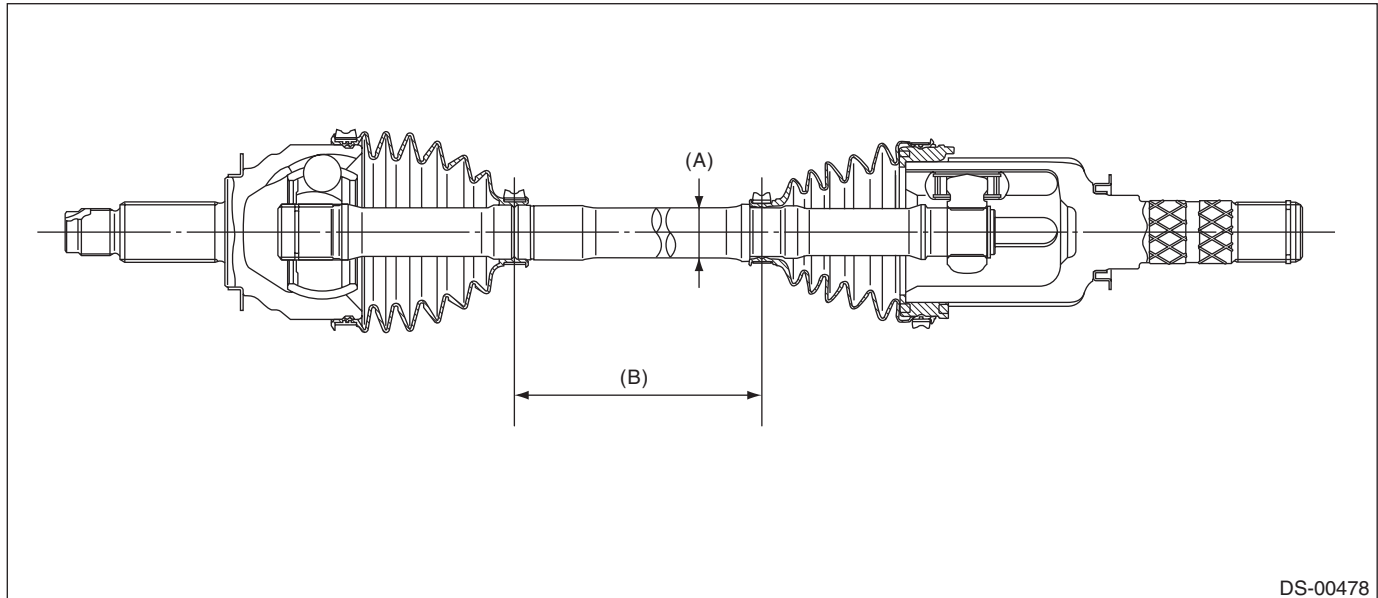
DS-00580

(A) 3UJ + CPS type

(B) EDJ type

### 2. FRONT DRIVE SHAFT ASSEMBLY

Model	Type of drive shaft	Axle diameter $\phi$ mm (in)	Axle length mm (in)
Except for STI model	EBJ + PTJ	22 (0.87)	338.4 (13.32)
STI model	AC + AAR	28 (1.10)	343.1 (13.51)

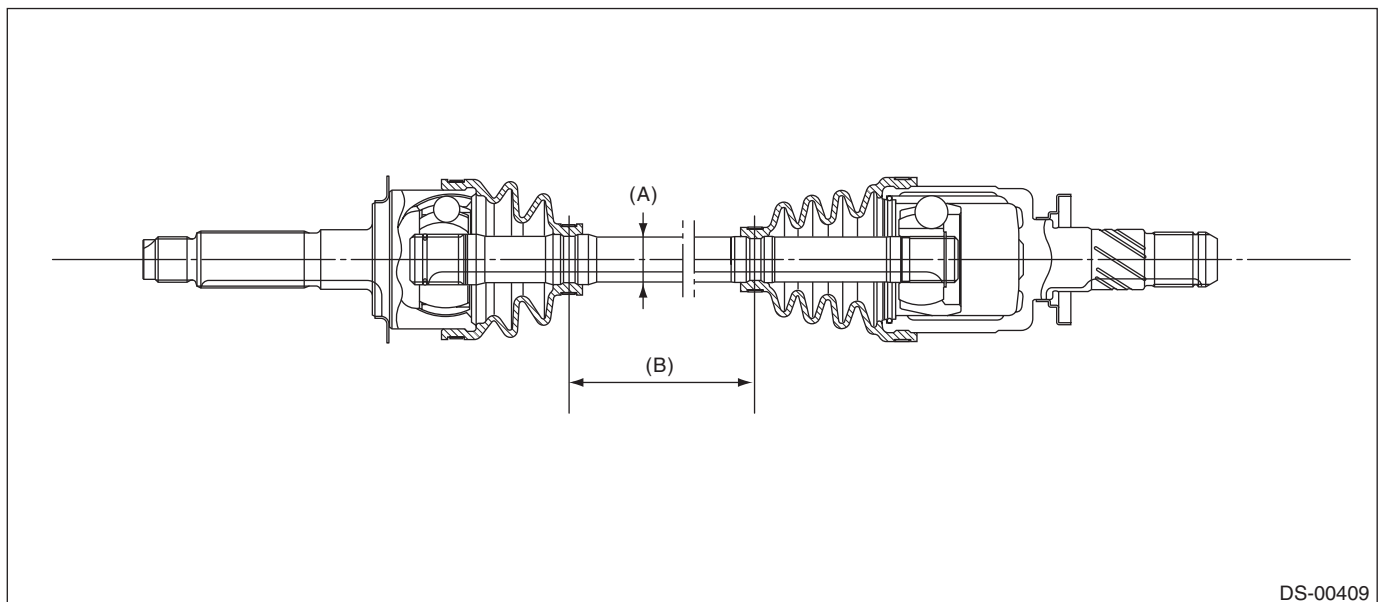


(A) Axle diameter

(B) Axle length

### 3. REAR DRIVE SHAFT ASSEMBLY

Model	Type of drive shaft	Axle diameter $\phi$ mm (in)	Axle length mm (in)
Except for STI model	EBJ + DOJ	22 (0.87)	388.5 (15.3)
STI model	EBJ + EDJ	25 (0.98)	339.5 (13.37)



(A) Axle diameter

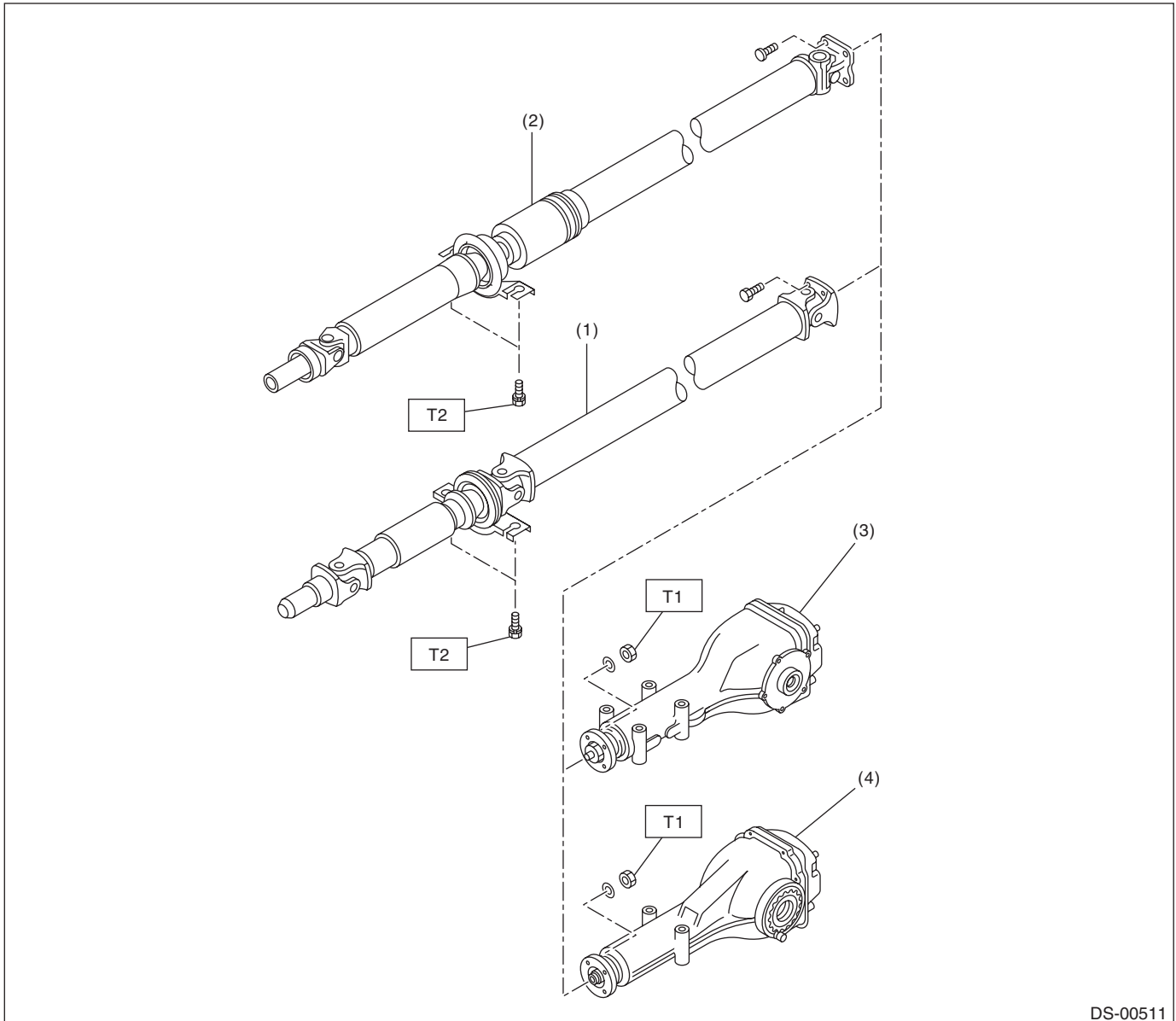
(B) Axle length

# General Description

## DRIVE SHAFT SYSTEM

### B: COMPONENT

#### 1. PROPELLER SHAFT



- (1) Propeller shaft (3UJ-type)
- (2) Propeller shaft (EDJ-type)

- (3) Rear differential (T-type)
- (4) Rear differential (VA2-type)

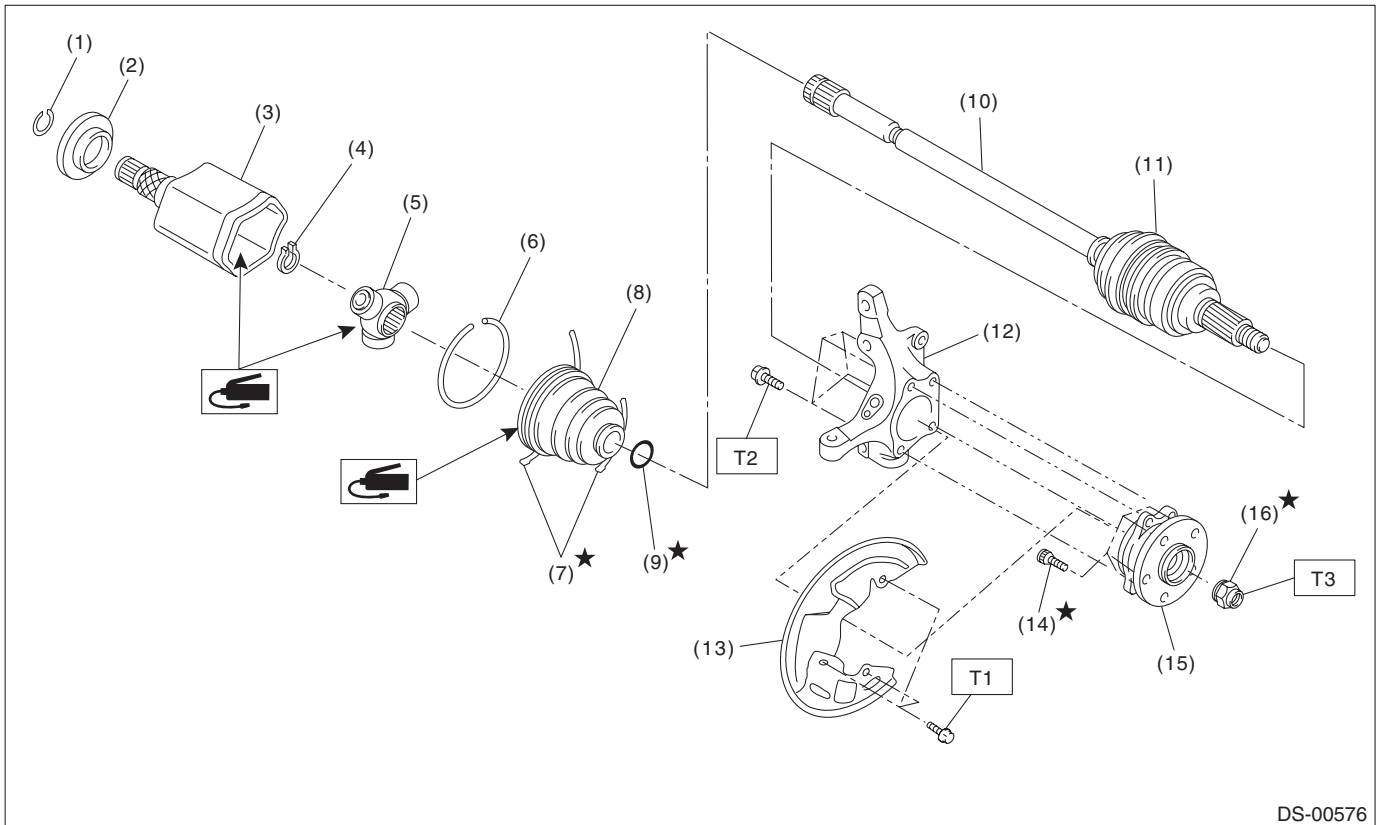
**Tightening torque: N·m (kgf-m, ft-lb)**

**T1: 31 (3.2, 22.9)**

**T2: 52 (5.3, 38.4)**

### 2. FRONT AXLE

- Except for STI model



DS-00576

- |                      |                                  |
|----------------------|----------------------------------|
| (1) Circlip          | (9) O-ring                       |
| (2) Baffle plate     | (10) EBJ shaft ASSY              |
| (3) Outer race (PTJ) | (11) Boot (AC)                   |
| (4) Snap ring        | (12) Housing                     |
| (5) Trunnion         | (13) Back plate - front brake    |
| (6) Snap ring        | (14) Hub bolt                    |
| (7) Boot band        | (15) Hub unit COMPL - front axle |
| (8) Boot (PTJ)       | (16) Axle nut                    |

**Tightening torque: N-m (kgf-m, ft-lb)**

**T1: 18 (1.8, 13.3)**

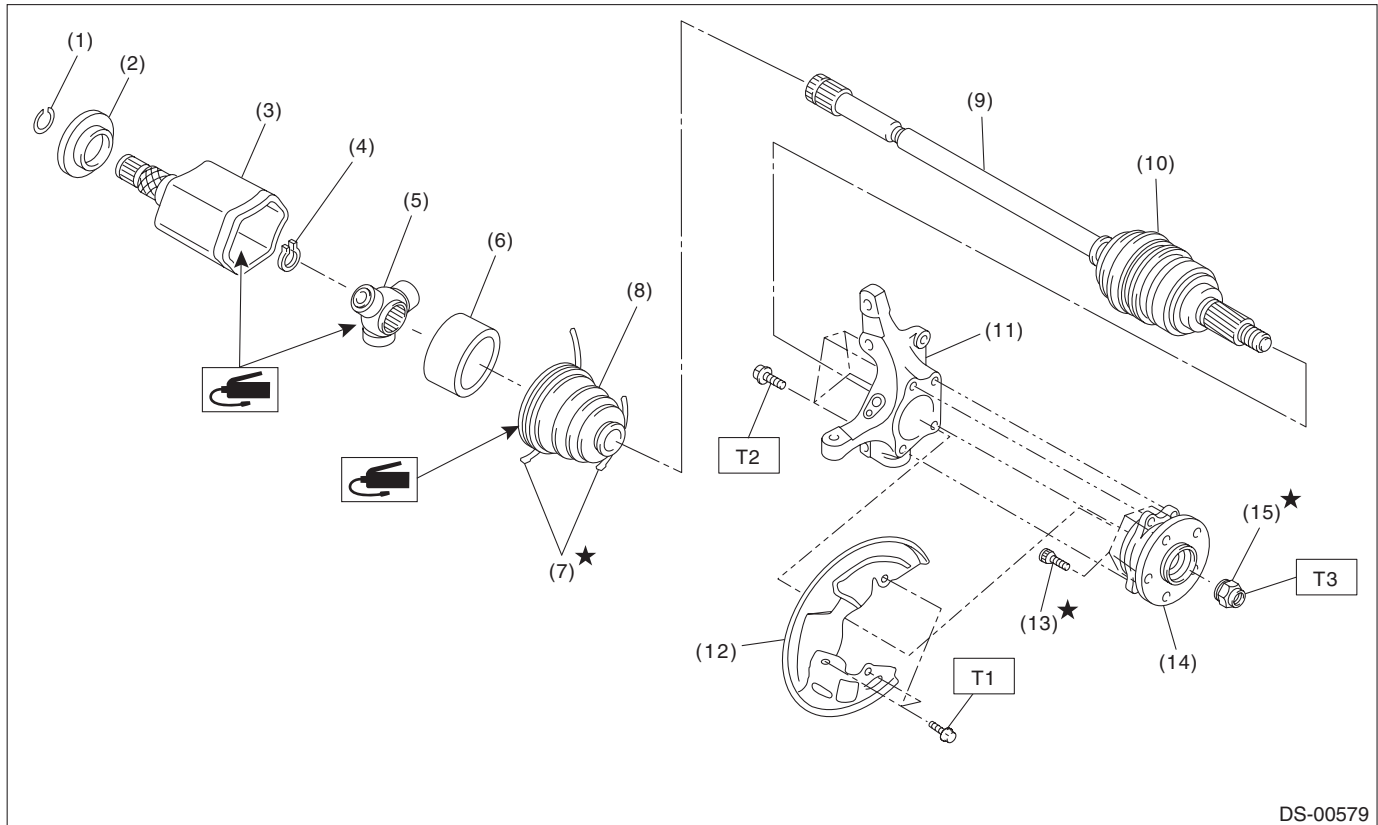
**T2: 65 (6.6, 47.9)**

**T3: 220 (22.4, 162.3)**

# General Description

## DRIVE SHAFT SYSTEM

### • STI model



- |                      |                                  |
|----------------------|----------------------------------|
| (1) Circlip          | (9) AC shaft ASSY                |
| (2) Baffle plate     | (10) Boot (AC)                   |
| (3) Outer race (AAR) | (11) Housing                     |
| (4) Snap ring        | (12) Back plate - front brake    |
| (5) Trunnion         | (13) Hub bolt                    |
| (6) Grommet          | (14) Hub unit COMPL - front axle |
| (7) Boot band        | (15) Axle nut                    |
| (8) Boot (AAR)       |                                  |

**Tightening torque: N·m (kgf-m, ft-lb)**

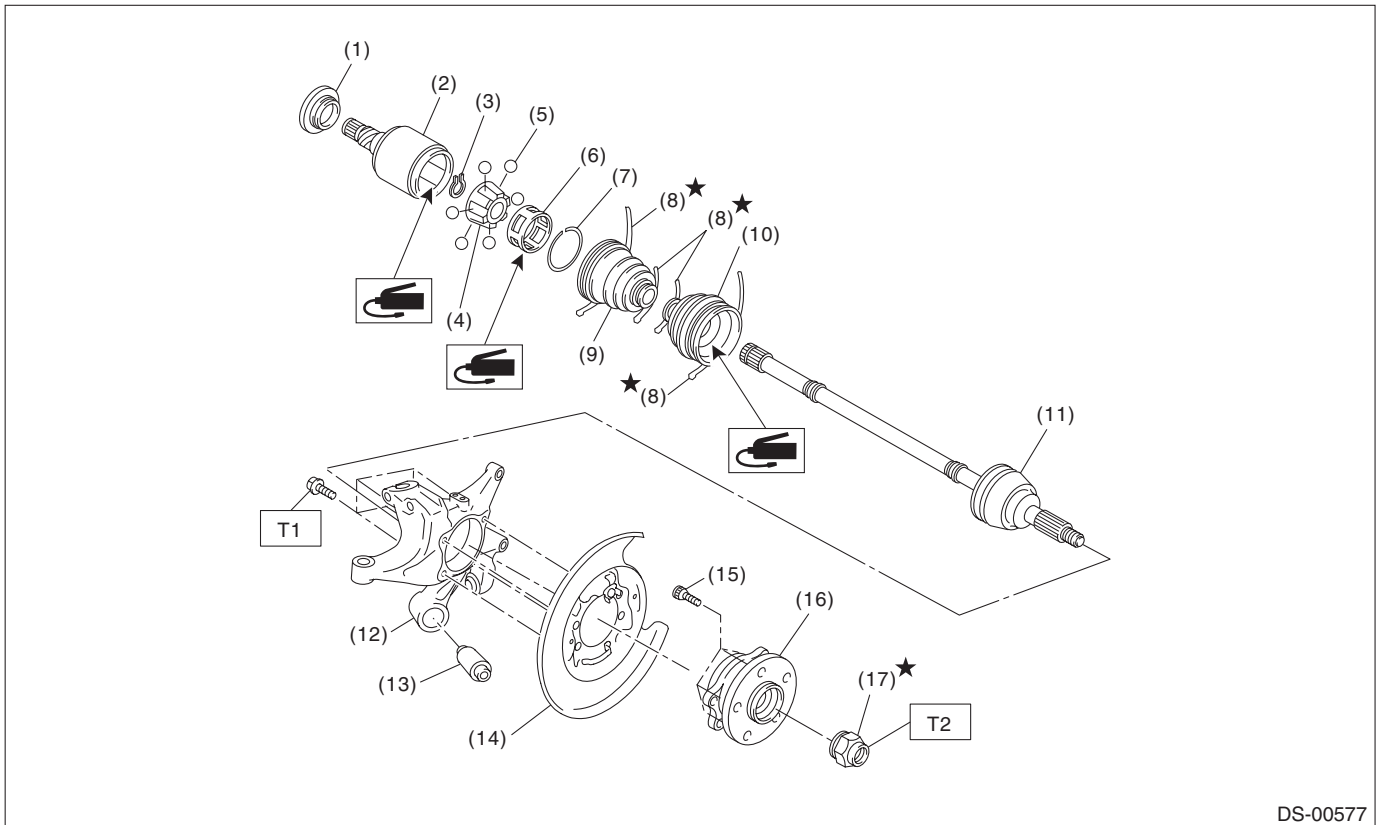
**T1: 18 (1.8, 13.3)**

**T2: 65 (6.6, 47.9)**

**T3: 220 (22.4, 162.3)**

### 3. REAR AXLE

- Except for STI model



DS-00577

- (1) Baffle plate
- (2) Outer race (DOJ)
- (3) Snap ring
- (4) Inner race
- (5) Ball
- (6) Cage
- (7) Snap ring

- (8) Boot band
- (9) Boot (DOJ)
- (10) Boot (BJ)
- (11) EBJ shaft ASSY
- (12) Rear axle housing
- (13) Bushing
- (14) Back plate - rear brake

- (15) Hub bolt
- (16) Hub unit COMPL - rear axle
- (17) Axle nut

**Tightening torque: N·m (kgf·m, ft·lb)**

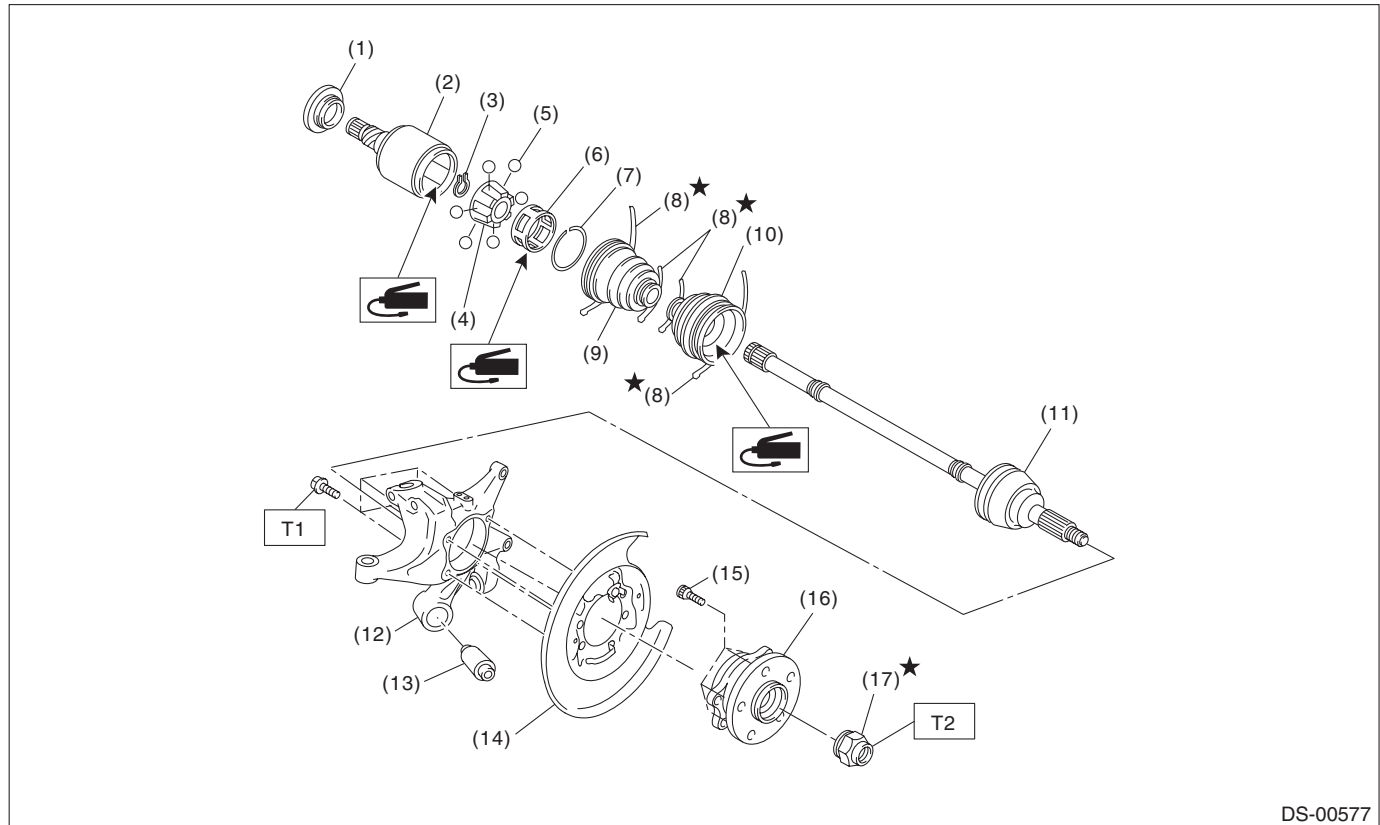
**T1: 65 (6.6, 47.9)**

**T2: 190 (19.4, 140.1)**

# General Description

## DRIVE SHAFT SYSTEM

- STI model



DS-00577

(1) Baffle plate	(8) Boot band	(15) Hub bolt
(2) Outer race (EDJ)	(9) Boot (EDJ)	(16) Hub unit COMPL - rear axle
(3) Snap ring	(10) Boot (EBJ)	(17) Axle nut
(4) Inner race	(11) EBJ shaft ASSY	
(5) Ball	(12) Rear axle housing	
(6) Cage	(13) Bushing	
(7) Snap ring	(14) Back plate - rear brake	

### **Tightening torque: N-m (kgf-m, ft-lb)**

**T1: 65 (6.6, 47.9)**

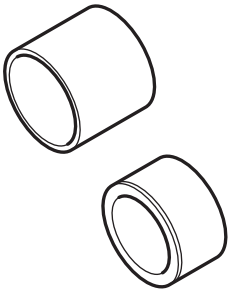
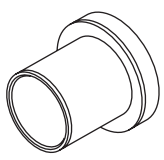
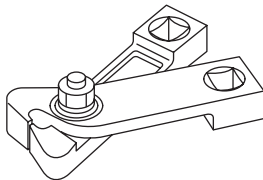
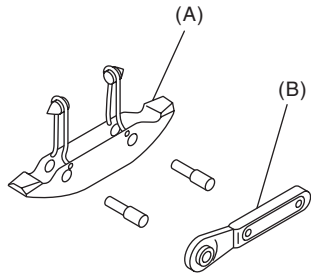
**T2: 190 (19.4, 140.1)**

## C: CAUTION

- When performing any work, always wear work clothes, a work cap and protective shoes. Additionally, wear a helmet, protective goggles, etc. if necessary.
- Remove contamination including dirt and corrosion before removal, installation, disassembly or assembly.
- When performing a repair, identify the cause of trouble and avoid unnecessary removal, disassembly and replacement.
- Some vehicle components are extremely hot immediately after driving. Be wary of receiving burns from heated parts.
- Use SUBARU genuine grease, the recommended or equivalent. Do not mix grease etc. of different grades or manufacturers.
- Be sure to tighten fasteners including bolts and nuts to the specified torque.
- Always use the jack-up point when the shop jacks or rigid racks are used to support the vehicle.
- Apply grease onto sliding or revolving surfaces before installation.
- Be sure that the surface of brake disc, brake pad or brake shoe is free from grease or oil.
- Do not secure a part in a vise directly. Place cushioning materials such as wood blocks, aluminum plates, or waste cloth between the part and the vise.
- When the suspension-related components have been removed or replaced, perform "VDC sensor mid-point setting mode" of the VDC. <Ref. to VDC-16, ADJUSTMENT, VDC Control Module and Hydraulic Control Unit (VDCCM&H/U).>

## D: PREPARATION TOOL

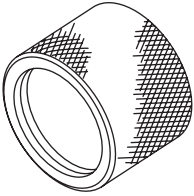
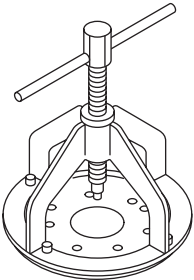
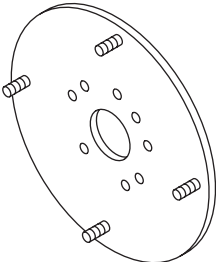
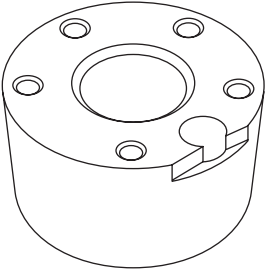
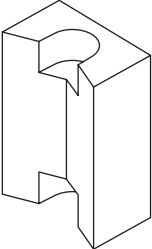
### 1. SPECIAL TOOL

ILLUSTRATION	Part No.	DESCRIPTION	REMARKS
 <p>ST20099PA010</p>	20099PA010	INSTALLER & REMOVER	<ul style="list-style-type: none"> <li>Used for replacing the bushing - trailing link of the housing assembly - rear axle.</li> <li>Used together with BUSHING REMOVER (20099FG000).</li> </ul>
 <p>ST20099FG000</p>	20099FG000	BUSHING REMOVER	<ul style="list-style-type: none"> <li>Used for replacing the bushing - trailing link of the housing assembly - rear axle.</li> <li>Used together with base part of INSTALLER &amp; REMOVER (20099PA010).</li> </ul>
 <p>ST28099AC000</p>	28099AC000	BOOT BAND PLIER	Used for tightening the band - boot. (for front drive shaft)
 <p>ST-925091000</p>	925091000	BAND TIGHTENING TOOL	Used for tightening the band - boot. (A) Jig for the band (B) Ratchet wrench



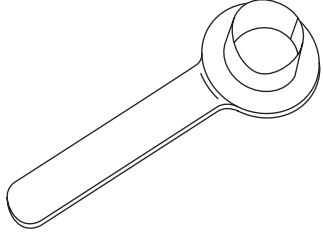
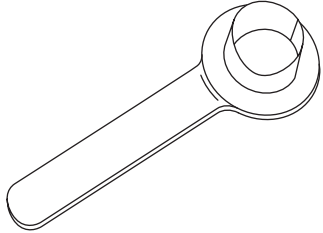
# General Description

## DRIVE SHAFT SYSTEM

ILLUSTRATION	Part No.	DESCRIPTION	REMARKS
 ST18675AA000	18675AA000	DIFFERENTIAL SIDE OIL SEAL INSTALLER	Used for installing the differential side retainer oil seal.
 ST-926470000	926470000	AXLE SHAFT PULLER	<ul style="list-style-type: none"> <li>Used for removing the drive shaft.</li> <li>Used together with AXLE SHAFT PULLER PLATE (28099PA110).</li> </ul>
 ST28099PA110	28099PA110	AXLE SHAFT PULLER PLATE	<ul style="list-style-type: none"> <li>Used for removing the drive shaft.</li> <li>Exchange with the plate of the AXLE SHAFT PULLER (926470000) to use.</li> </ul>
 ST28099PA080	28099PA080	HUB STAND	Used for assembling the bolt - hub of the hub.
 ST28399AG000	28399AG000	HUB STAND	Used for extracting the bolt - hub.

# General Description

## DRIVE SHAFT SYSTEM

ILLUSTRATION	Part No.	DESCRIPTION	REMARKS
 <p>ST28399SA010</p>	28399SA010	OIL SEAL PROTECTOR	<ul style="list-style-type: none"> <li>Used for installing front drive shaft into front differential.</li> <li>For protecting the oil seal.</li> </ul>
 <p>ST28099PA090</p>	28099PA090	OIL SEAL PROTECTOR	<ul style="list-style-type: none"> <li>Used for installing the rear drive shaft to the rear differential.</li> <li>For protecting the oil seal.</li> </ul>

## 2. GENERAL TOOL

TOOL NAME	REMARKS
Tie-rod ball joint puller	Used for disconnecting joints.
Dial gauge	Used for inspecting the propeller shaft run-out.
Extension cap	Used for preventing leakage of gear oil or ATF.
Crowbar	Used for extracting drive shaft.
Needle nose pliers	Used for tightening the band - boot of the rear drive shaft. <ul style="list-style-type: none"> <li>Snap-on 96BCP</li> </ul> Or equivalent.